



Meeting Test Page

Installation Guide

Copyright 2004 Instant Technologies
October 19, 2004

Setup

1. Download the installation EXE from the Instant Technologies Web-site.
2. Run the downloaded EXE
3. Select the correct Domino Data to install the files into
4. The test page files are installed into a folder under your domino/html directory called "testjvm" example "C:\lotus\domino\data\domino\html\testjvm"

Configuration

Within the "testjvm" folder there are 4 files you can modify:

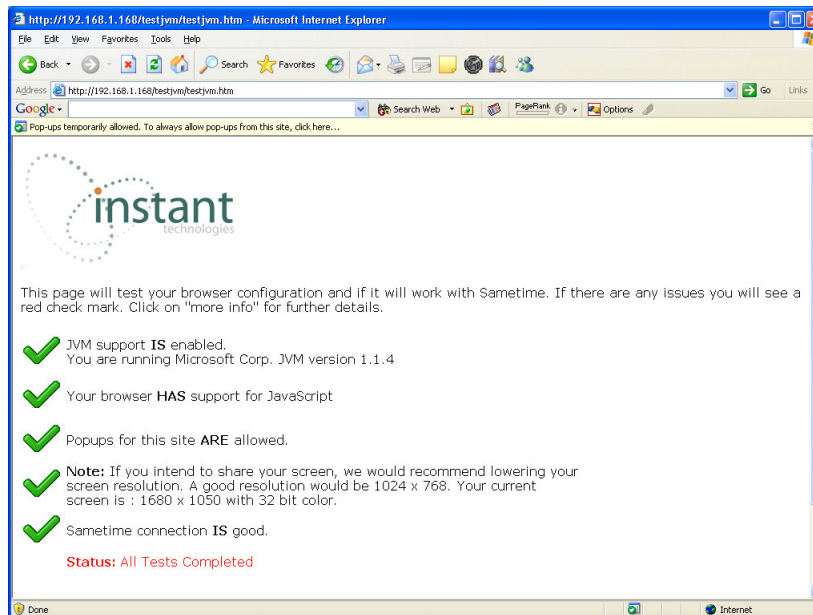
- **companylogo.gif** - If you wish to change the logo displayed at the top of the test page with your own company logo, you can replace this file with another gif called companylogo.gif
- **cross.gif** - If you wish to change the graphic used to indicate that a test item failed, you can replace this file with a gif file with the same height and width.
- **tick.gif** - If you wish to change the graphic used to indicate that a test item passed, you can replace this file with a gif file with the same height and width.
- **constants.js** - this file contains constants for the test page. If you wish to change any defaults within the application, this is where they are changed. You will need to modify this file to specify the location for the help text for any failed items and which Sametime ports to test.

Accessing the Test Page

To access the test page you would enter the following into a browser:

http://<<sametimeserver>>/testjvm/testjvm.htm

Where <<sametimeserver>> is the Fully Qualified Host Name of your Sametime server. This should result in a page that looks like this:



Known Limitations

- The current version of the application shows a success icon if any of the ports succeed in connecting with the Sametime Server. For most installations of Sametime, customers running Sametime for external users, should enable HTTP tunneling, which really means you only need to test Port80. If you need to see for a user which ports failed and succeeded, you can look in the Java console for more details.
- The Test application cannot test ports if connecting through a proxy.