

# Instant Gateway Disclaimer Deployment Guide



**Instant Technologies**

**May 27, 2009**

**Version 1**

**ADDING VALUE TO ENTERPRISE INSTANT MESSAGING PLATFORMS**

## **Copyright and Disclaimer**

This document, as well as the software described in it, is furnished under license of the Instant Technologies Software Evaluation Agreement and may be used or copied only in accordance with the terms of such license. The content of this document is furnished for informational use only, is subject to change without notice, and should not be construed as a commitment by Instant Technologies. Instant Technologies assumes no responsibility or liability for any errors or inaccuracies that may appear in this document. All information in this document is confidential and proprietary.

Except as permitted by the Software Evaluation Agreement, no part of this document may be reproduced, stored in a retrieval system, or transmitted in any form or by any means, electronic, mechanical, recording, or otherwise, without the prior written permission of Instant Technologies.

Copyright © 2009 Instant Technologies, All rights reserved.

## **Trademarks**

All other trademarks are the property of their respective owners.

## **Contact Information**

See our Web site for Customer Support information.

<http://www.instant-tech.com>

# Contents

|  |           |
|--|-----------|
| <b>WELCOME TO INSTANT GATEWAY DISCLAIMER DEPLOYMENT GUIDE.....</b> | <b>1</b>  |
| <b>INSTALLING DISCLAIMER PLUG-IN .....</b>                         | <b>2</b>  |
| <b>STARTING AND CONFIGURING DISCLAIMER PLUG-IN .....</b>           | <b>9</b>  |
| STARTING PLUG-IN .....   | 9         |
| ENABLING PLUG-IN .....   | 10        |
| CONFIGURING PLUG-IN.....   | 12        |
| <b>SENDING US FEEDBACK AND SUGGESTIONS .....</b>                   | <b>14</b> |



# Welcome to Instant Gateway Disclaimer Deployment Guide

---

Welcome to Instant Disclaimer for Sametime Gateway deployment guide.

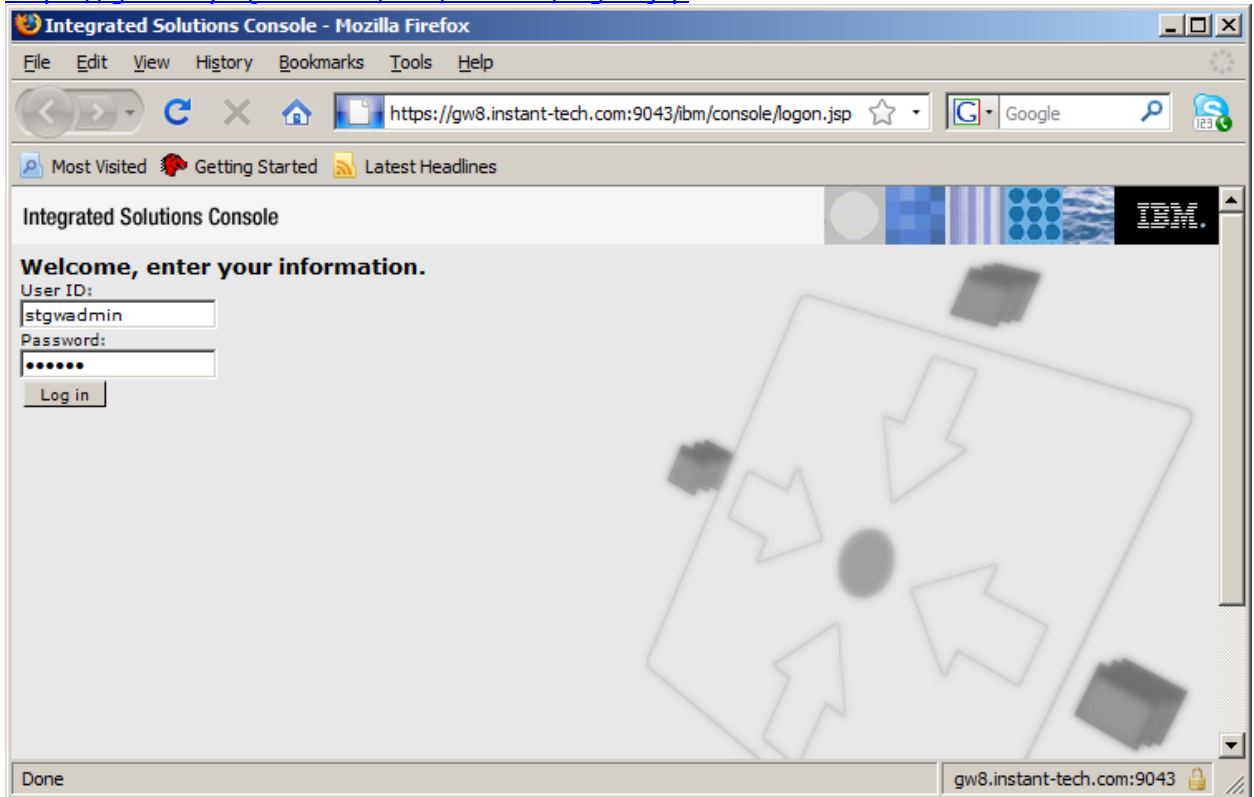
Deployment guide specifies the steps required to install the Disclaimer plug-in on a Sametime Gateway server. This allows Sametime Gateway to push text notifications to either internal community users (Sametime Community) or external community (AOL, Yahoo and external Sametime Communities) users or both. Notifications are tagged to the first message sent out by a user. It allows participants to know that the chat conversations are being logged by the Sametime Server.

## Installing Disclaimer Plug-in

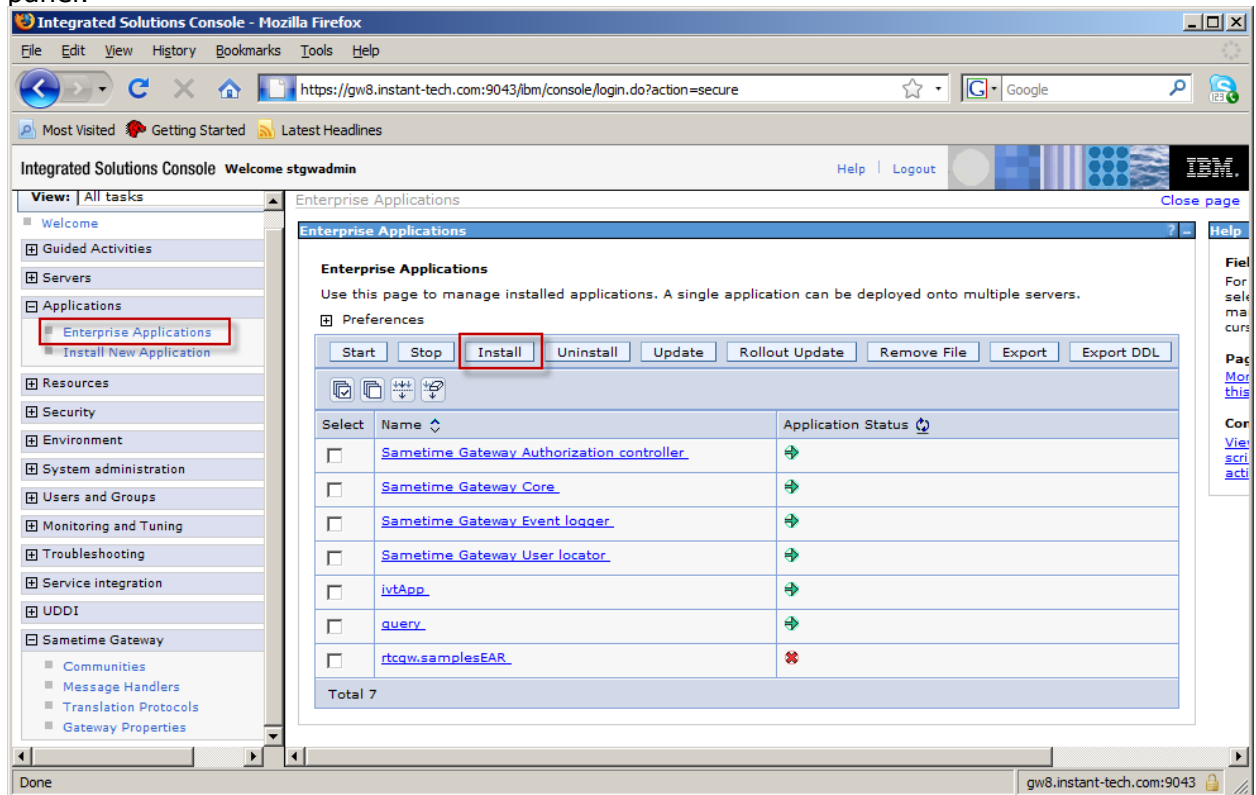
---

Before starting the install procedure you will need to download the **disclaimer.war** file from Instant Technologies. After obtaining the .war file, take the following steps:

1. Launch the gateway console URL using a browser. URL is typically:  
<https://gatewayFQDN:9043/ibm/console/logon.jsp>

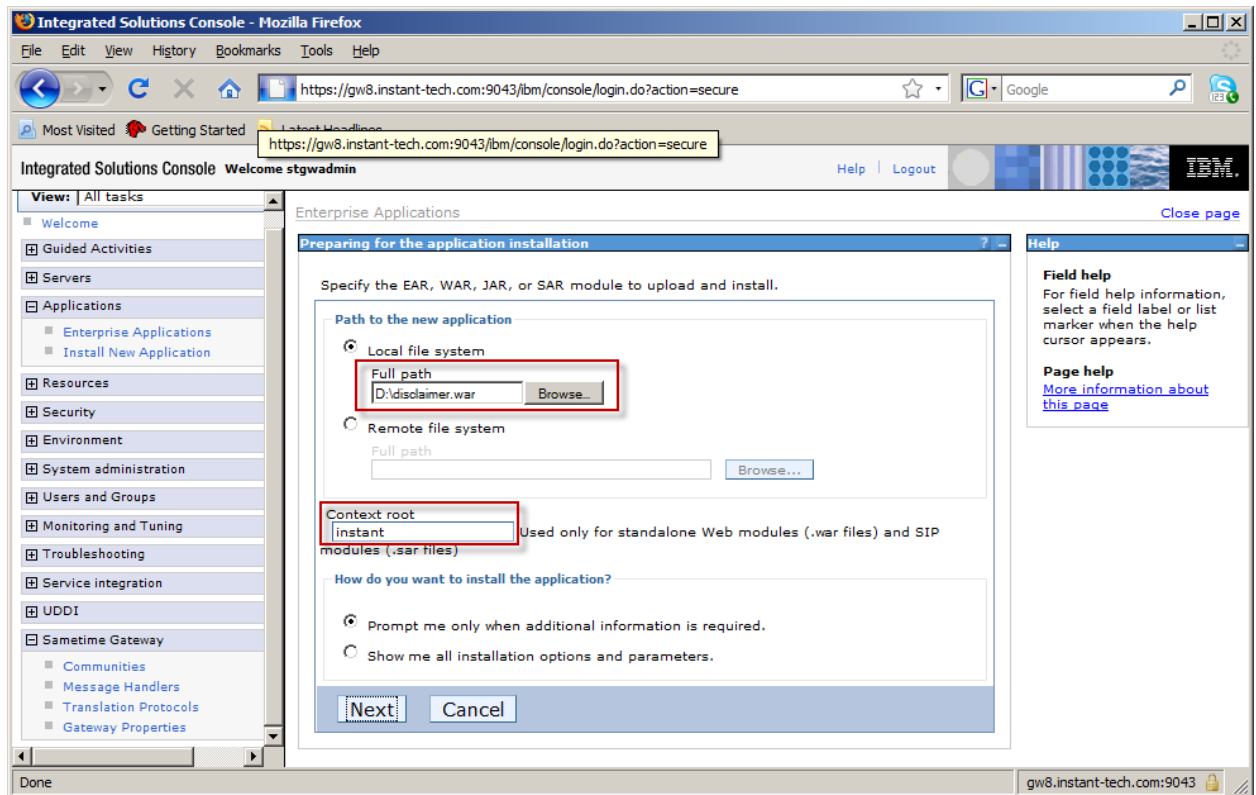


2. After successful login navigate to "Enterprise Applications" node using the Navigation panel.



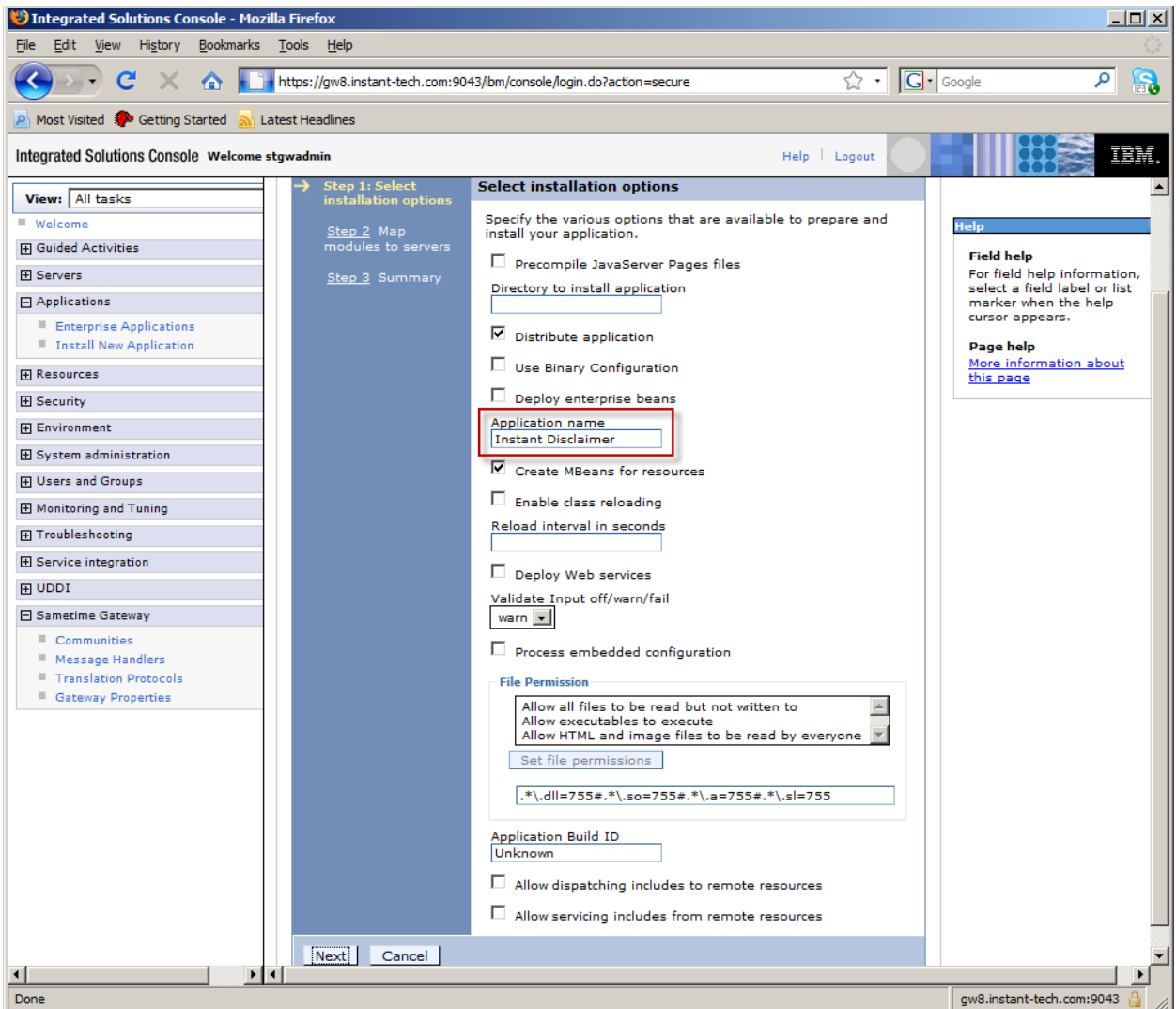
3. Next, click on the "Install" command button to start plug-in installation process.

- Next, you will be presented with the following dialog. Specify the path to the war file and provide a value for "Context root" (it can be any text value).

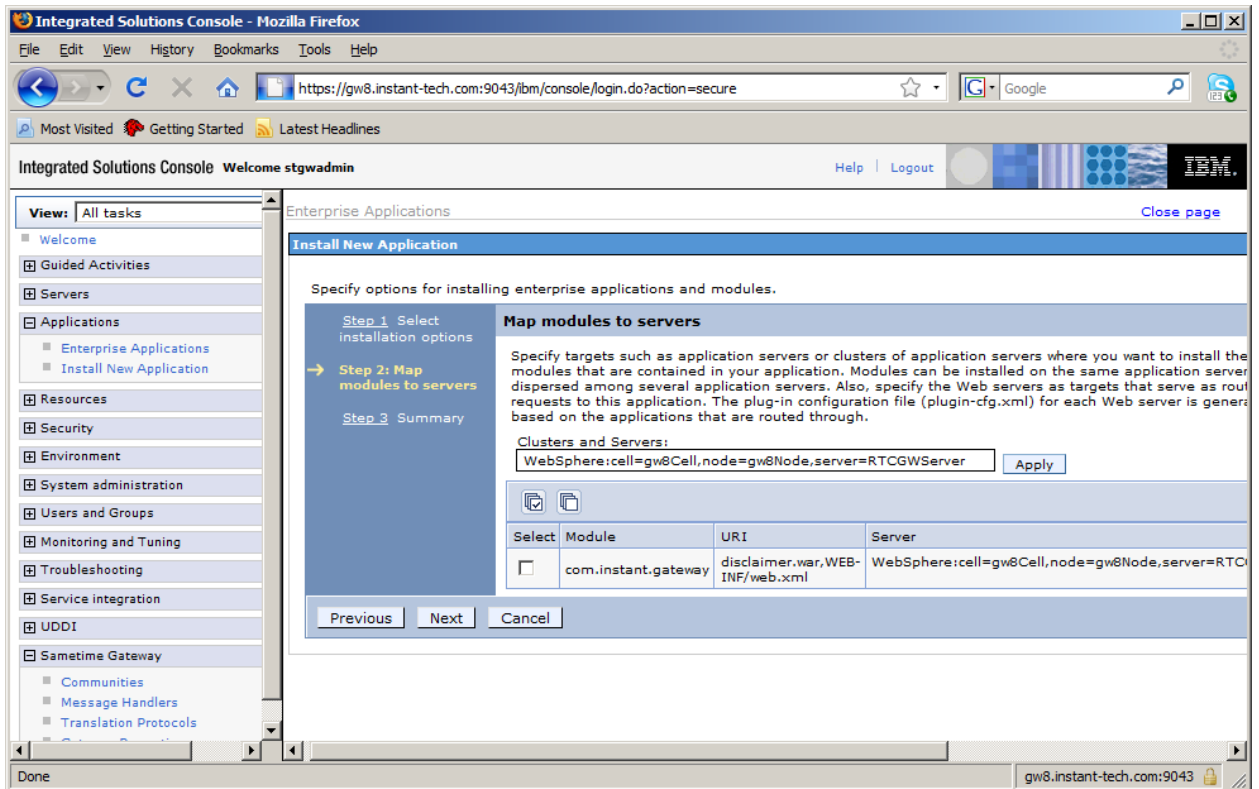


- After specifying values press the "Next" command button.

6. Next, you will be presented with the following dialog. Specify a value for "Application Name" field as specified in the screenshot and press "Next".



- Now you will be presented with the following dialog. Do not make any changes and press the "Next" command button.



- Now you will be presented with the following dialog which displays summary. Click "Next" to proceed further.

The screenshot shows the 'Integrated Solutions Console' in a Mozilla Firefox browser window. The main content area is titled 'Enterprise Applications' and contains a dialog box for 'Install New Application'. The dialog is currently on 'Step 3: Summary'. A sidebar on the left lists navigation options, with 'Install New Application' selected. The main area displays a 'Summary of installation options' table and a 'Help' panel on the right.

Specify options for installing enterprise applications and modules.

Step 1 Select installation options  
Step 2 Map modules to servers  
→ Step 3: Summary

**Summary**

| Options  | Values                                      |
|--|---|
| Precompile JavaServer Pages files              | No  |
| Directory to install application               |   |
| Distribute application                         | Yes   |
| Use Binary Configuration                       | No  |
| Deploy enterprise beans                        | No  |
| Application name                               | Instant Disclaimer                          |
| Create MBeans for resources                    | Yes   |
| Enable class reloading                         | No  |
| Reload interval in seconds                     |   |
| Deploy Web services                            | No  |
| Validate Input off/warn/fail                   | warn  |
| Process embedded configuration                 | No  |
| File Permission                                | .*\,dll=755#.*\,so=755#.*\,a=755#.*\,sl=755 |
| Application Build ID                           | Unknown                                     |
| Allow dispatching includes to remote resources | No  |
| Allow servicing includes from remote resources | No  |
| Cell/Node/Server                               | <a href="#">Click here</a>                  |

Buttons: Previous, Finish, Cancel

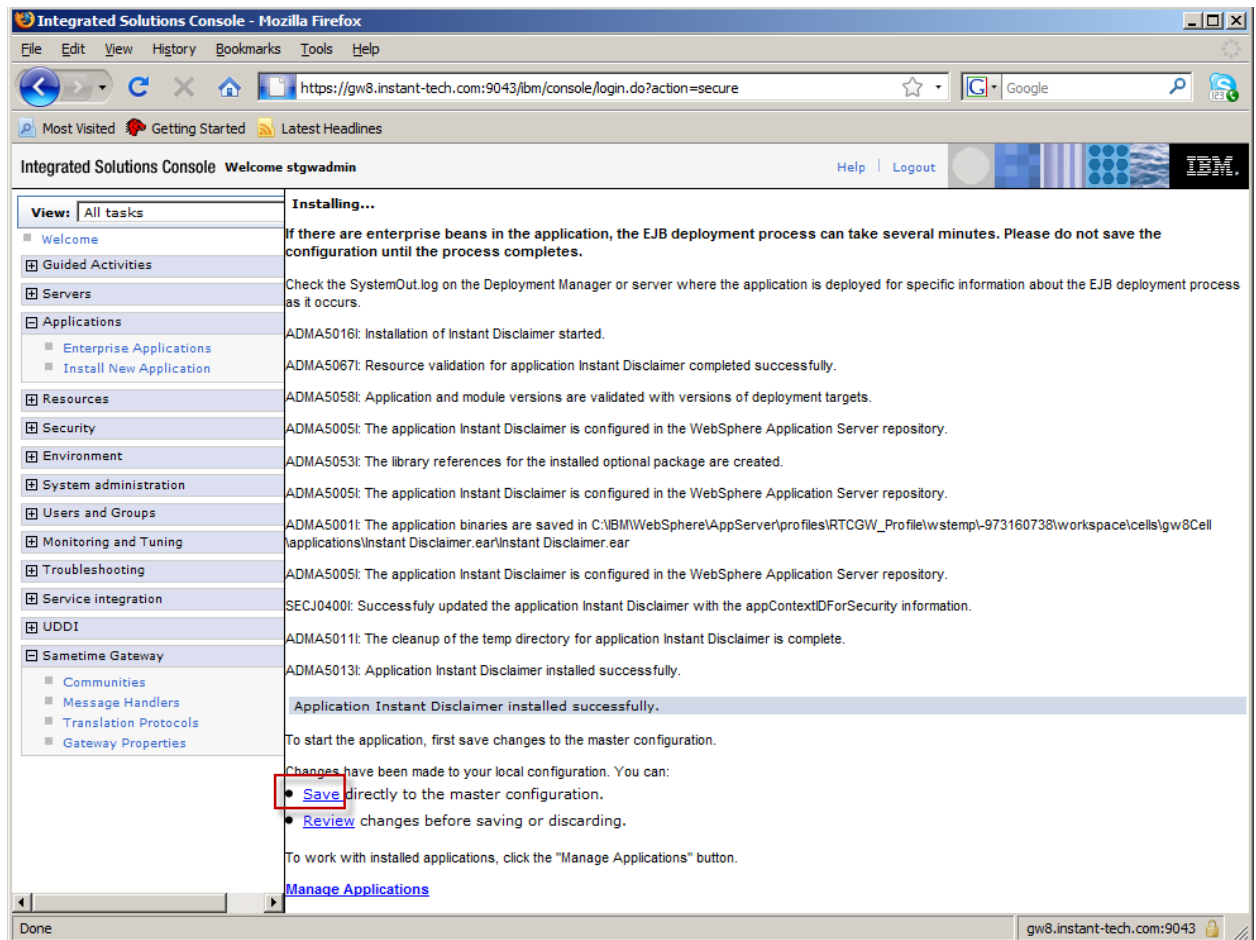
Help panel content:

**Field help**  
For field help information, select a field label or list marker when the help cursor appears.

**Page help**  
[More information about this page](#)

**Command Assistance**  
[View administrative scripting command for last action](#)

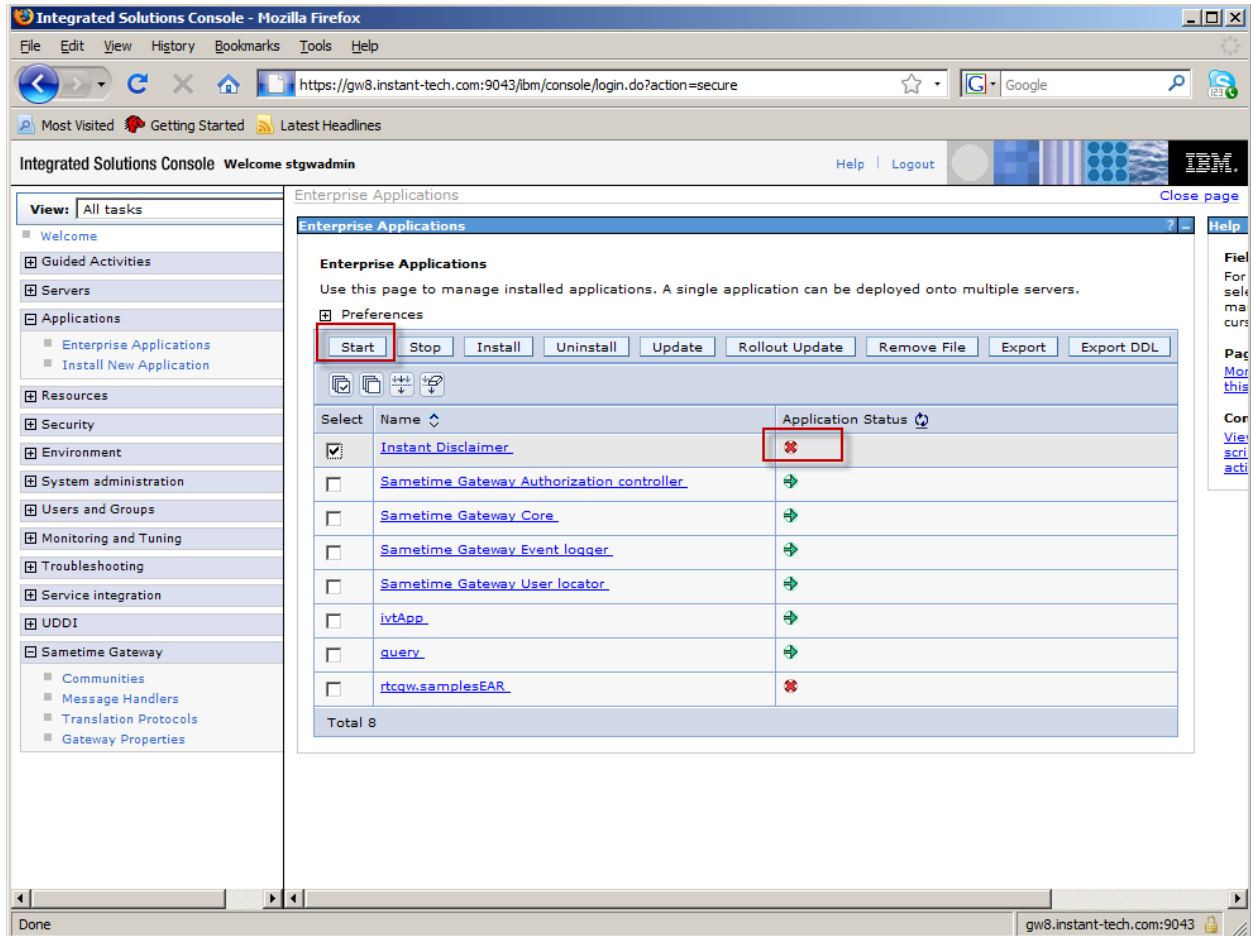
9. Sametime Gateway will now start the install process and display details while installing the plug-in. After the installation process ends you will need to save the master configuration changes as highlighted in the following screenshot.



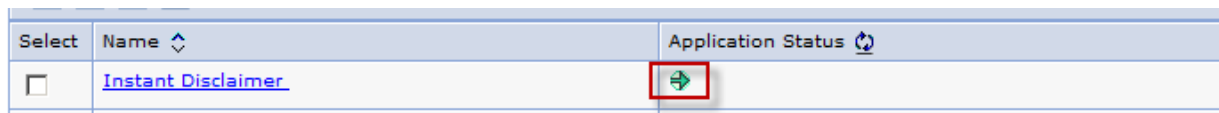
# Starting and Configuring Disclaimer Plug-in

## Starting Plug-in

After the plug-in has been successfully installed, it will appear in the list as “Instant Disclaimer” in the Enterprise Applications list.



Next, you will need to select the “Instant Disclaimer” application from the list and start it. After application has started, the application status icon will turn to green as specified in the following screenshot.

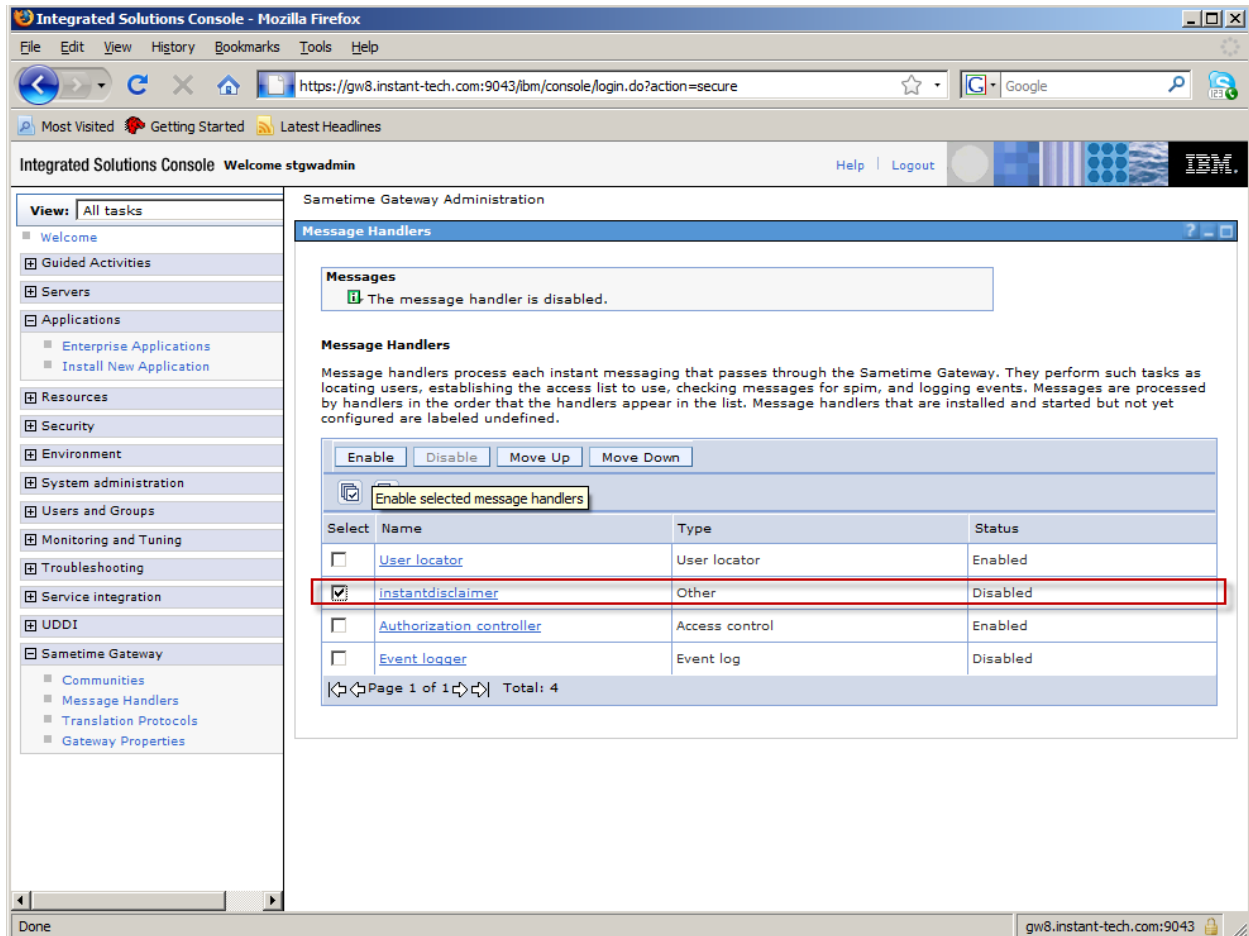


## Enabling Plug-in

After starting the plug-in, you need to enable the plug-in and specify plug-in properties. To specify plug-in properties, navigate to "Message Handlers" node from the navigation panel.



Application will appear as "instantdisclaimer" in the message handlers list.

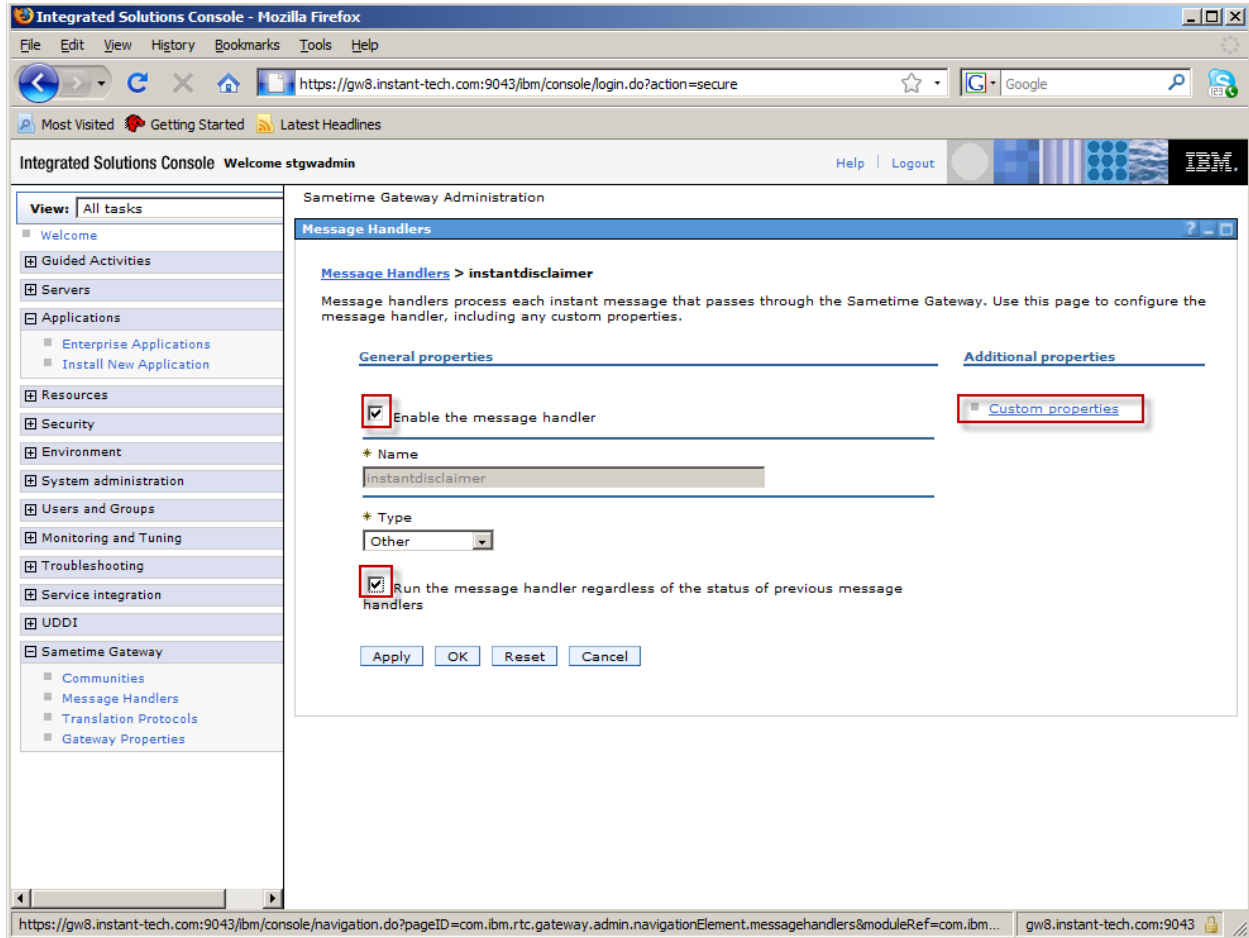


The screenshot shows the 'Integrated Solutions Console' in a Mozilla Firefox browser. The main content area is titled 'Message Handlers' and contains a message: 'The message handler is disabled.' Below this is a table of message handlers. The 'instantdisclaimer' application is selected, and the 'Enable' button is highlighted.

| Select                              | Name                                     | Type           | Status   |
|-------------------------------------|--|----------------|----------|
| <input type="checkbox"/>            | <a href="#">User locator</a>             | User locator   | Enabled  |
| <input checked="" type="checkbox"/> | <a href="#">instantdisclaimer</a>        | Other          | Disabled |
| <input type="checkbox"/>            | <a href="#">Authorization controller</a> | Access control | Enabled  |
| <input type="checkbox"/>            | <a href="#">Event logger</a>             | Event log      | Disabled |

Select the "instantdisclaimer" application and click on "Enable" command button.

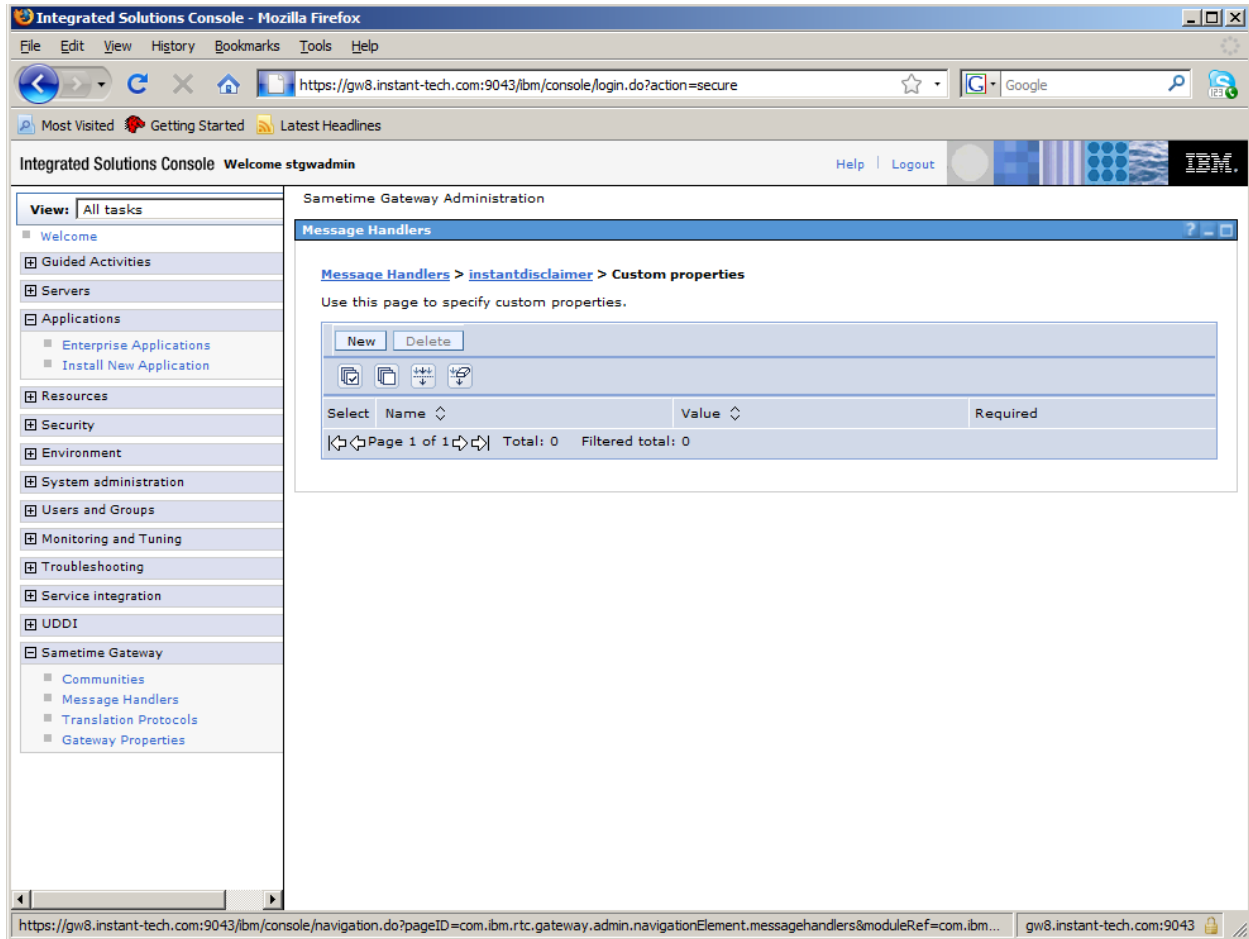
Next, you will see the following dialog showing plug-in properties



Select both of the check box options: "Enable the message handler" and "Run the message handler regardless of the status of previous message" and click "Apply" command button.

## Configuring Plug-in

After enabling the settings, select the hyperlink, "Custom properties" highlighted in the screenshot above. You will then be presented with the following dialog.

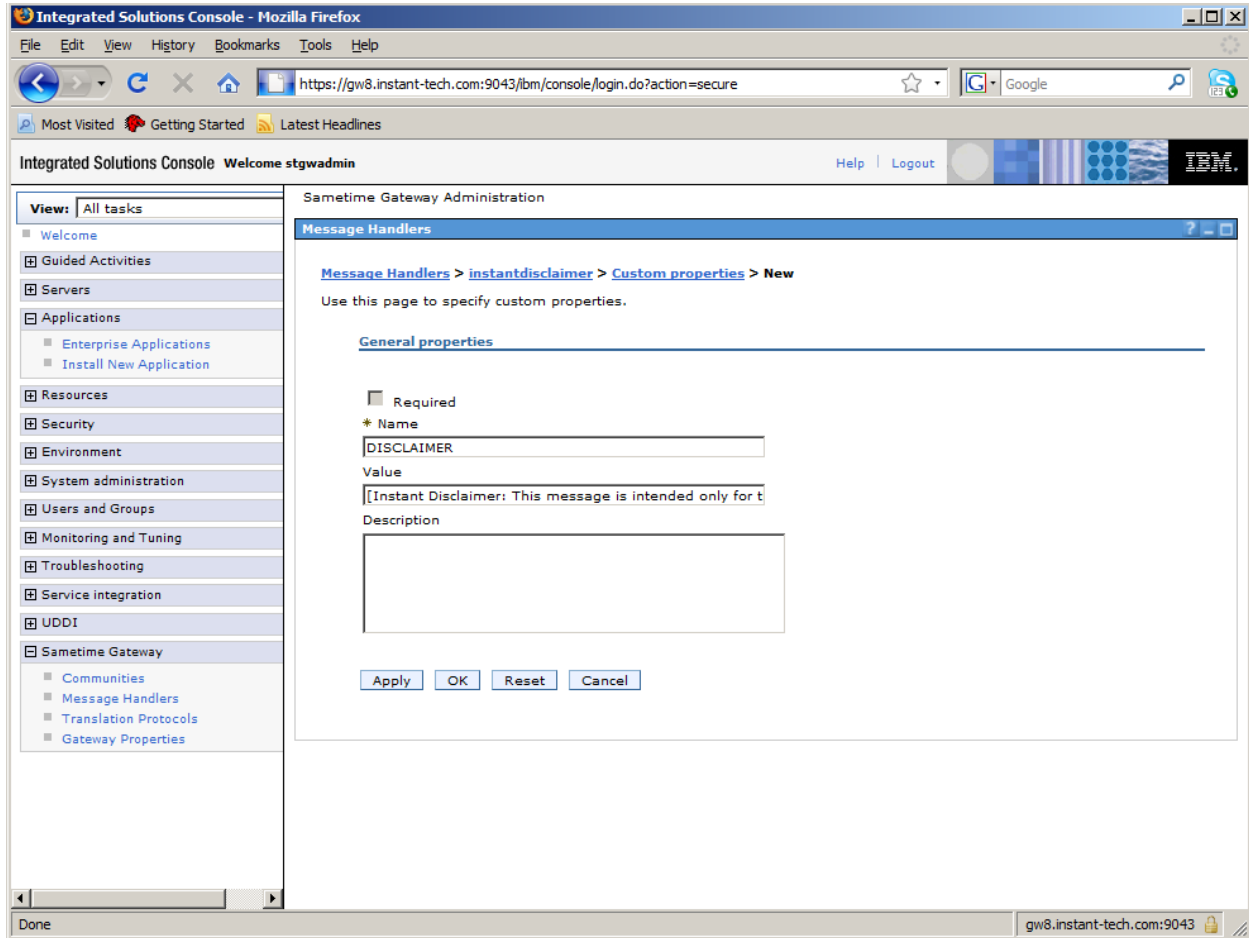


You will now need to use the "New" command button option to add the following properties:

1. **DISCLAIMER:** Specify the disclaimer message which needs to be sent to recipients. Maximum length of the disclaimer message cannot be more than 340 characters.
2. **ENABLE:** Set value for this property to TRUE to enable the plug-in or FALSE to disable the plug-in.
3. **NOTIFYINTERNAL:** Set value for this property to "TRUE" if you intend to send disclaimer message to users of local Sametime Community. And set value to "FALSE" to disable internal Sametime community notifications.
4. **NOTIFYEXTERNAL:** Set value for this property to "TRUE" if you intend to send disclaimer message to users of external community say AOL, Yahoo or external Sametime communities.

These properties can be modified anytime during runtime and do not require Gateway to be restarted.

Typical dialog for specifying a property looks like the following screenshot.



After specifying all the properties, the list will look like the following screenshot

| Select                   | Name                           | Value   | Required |
|--------------------------|--------------------------------|---|----------|
| <input type="checkbox"/> | <a href="#">DISCLAIMER</a>     | [Instant Disclaimer: This message is intended only for the personal and confidential use of the designated recipient(s). If you are not the intended recipient of this message you are hereby notified that any review, dissemination, distribution or copying of this message is strictly prohibited.] | False    |
| <input type="checkbox"/> | <a href="#">ENABLE</a>         | TRUE  | False    |
| <input type="checkbox"/> | <a href="#">NOTIFYEXTERNAL</a> | TRUE  | False    |
| <input type="checkbox"/> | <a href="#">NOTIFYINTERNAL</a> | TRUE  | False    |

Page 1 of 1 Total: 4 Filtered total: 4

## Sending Us Feedback and Suggestions

---

We value your suggestions and product feedback. As a design and development team, we recognize that most of the great ideas and suggestions come from our customers using, and extending, our products. If you have a product idea or suggestions, please take the time to compose a short email and send it to:

[info@instant-tech.com](mailto:info@instant-tech.com)

Thank you for taking the time to share your ideas and for using Instant Gateway Disclaimer Plug-in deployment guide.